



PROJECT TITLE:
ECSO GmbH
Konzler

DRAWING TITLE:
PRECISION
AIR CONDITIONER
(1 CYCLE)
HMT/D 1148 IX

SCALE: S/N

DATE: 2009. 01.30.

FILE NAME :
HST/D 1148 IX

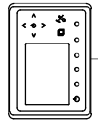
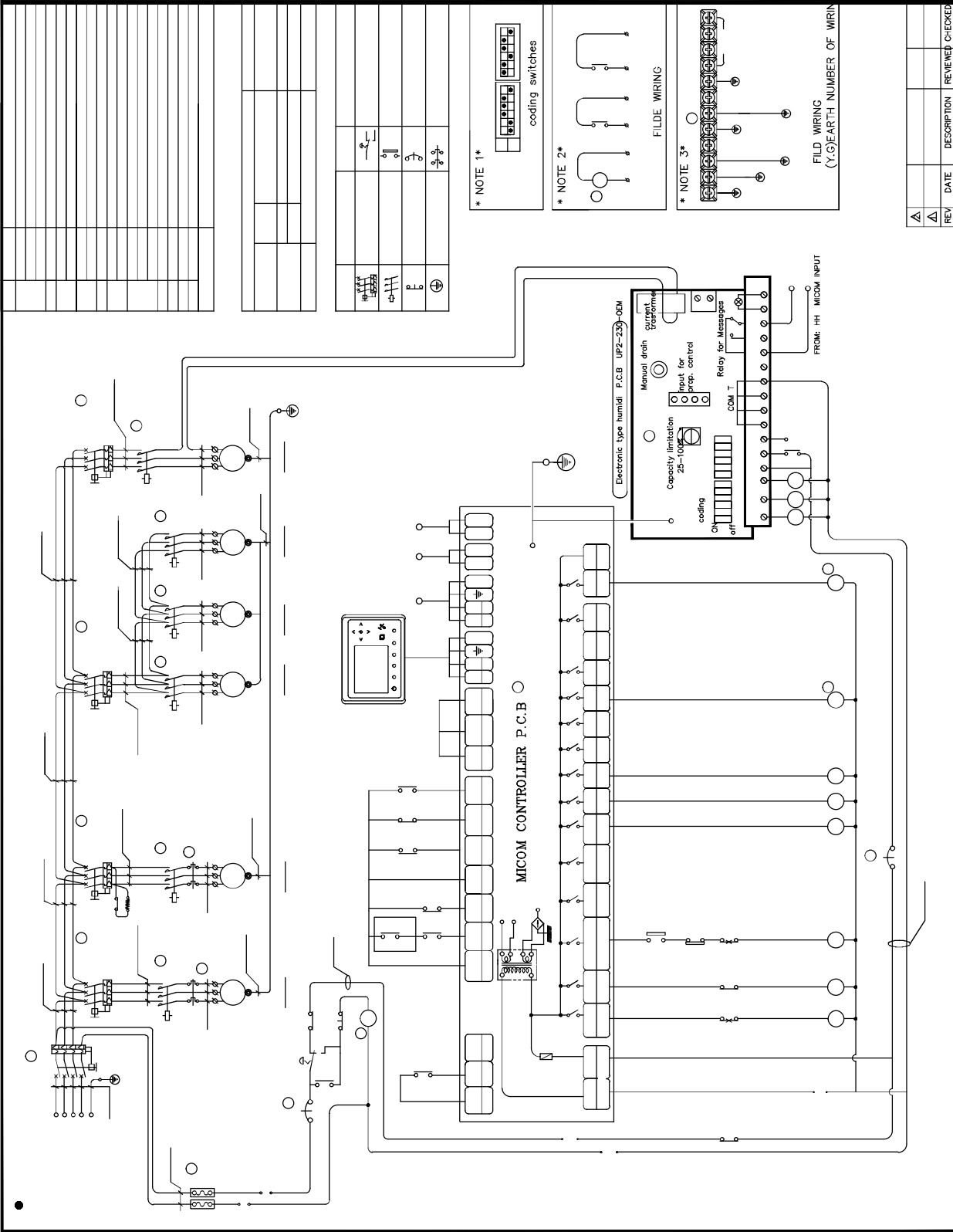
DWG NO:

DRAWING GRADE :

REQUEST NO :

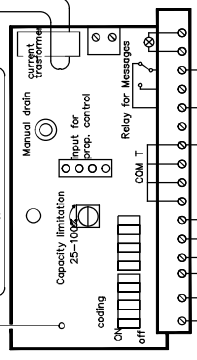
LEGEND :

| | |
|-------------|--|
| APPROVED BY | |
| DESIGNED BY | |
| CHECKED BY | |
| REVIEWER | |
| DATE | |
| DESCRIPTION | |
| REVIEWER | |
| CHECKED | |



MICOM CONTROLLER P.C.B

Electronic Type Humidi F.C.B UP2-230 OEM



FILDE WIRING

FILDE WIRING
(Y/G/EARTH NUMBER OF WIRING)



PROJECT TITLE:
ECISO GmbH
Kanzler

DRAWING TITLE:
PRECISION
AIR CONDITIONER
(10CYCLE)
HST/D 1148 IX

SCALE:
S/N

DATE:
2009. 01.30.

FILE NAME :

HST/D 1148 IX

DWG NO:

DRAWING GRADE :

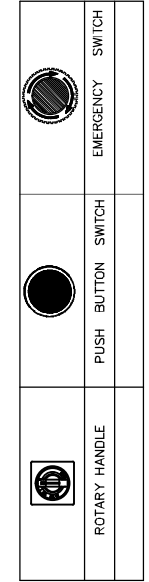
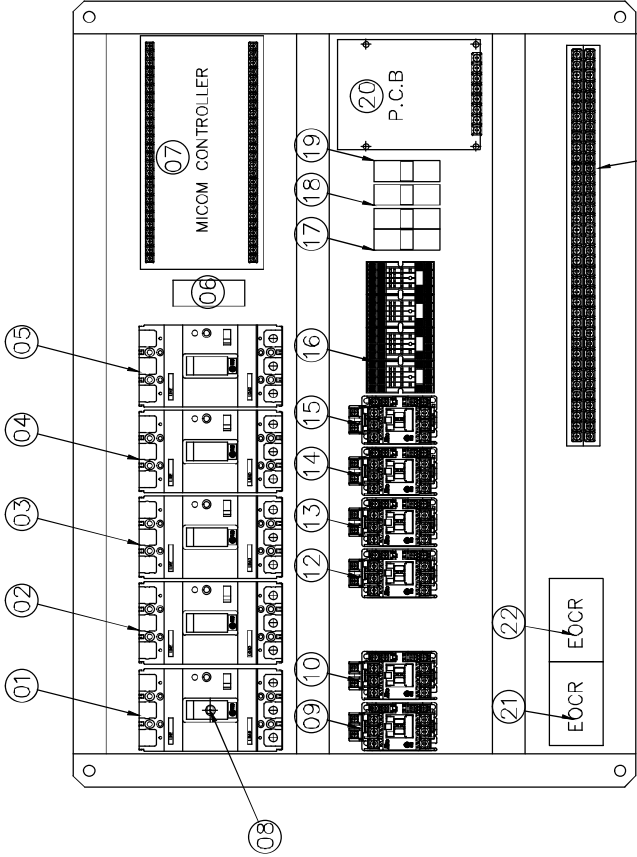
REQUEST NO :

LEGEND :

APPROVED BY
CHECKED BY
DESIGNED BY
DRAWING BY

ELECTRICAL PARTS LEGEND 50HZ

| NO. | MARK | LEGEND | DISCRPTION | DISCRPTION |
|-----|-------|--|----------------|---------------|
| 01 | MCCB | MOLDED CASE CIRCUIT BREAKER (MAIN POWER) | POWERB5 54 40A | VTZERO |
| 02 | MCCB | MOLDED CASE CIRCUIT BREAKER (BM) | ABS 33 05A | LG |
| 03 | MCCB | MOLDED CASE CIRCUIT BREAKER (CM) | ABS 33 20A | LG |
| 04 | ELCB | MOLDED CASE CIRCUIT BREAKER (RH) | EG53C 15A | FUJITSU |
| 05 | ELCB | MOLDED CASE CIRCUIT BREAKER (HH) | EG53C 10A | FUJITSU |
| 06 | SA | SENSOR ADAPTER | | NORDMANN |
| 07 | MICOM | MICROCOMPUTER | DDC-400 | SYSTRONICS |
| 08 | R/H | ROTARY HANDLE | HANDLE | LG |
| 09 | M/G | MAGNETIC CONNECTOR (BM) | GMC 09 | LG |
| 10 | M/G | MAGNETIC CONNECTOR (CM) | GMC 22 | LG |
| 11 | M/G | MAGNETIC CONNECTOR (REHEATER1) | GMC 9 | LG |
| 12 | M/G | MAGNETIC CONNECTOR (REHEATER2) | GMC 9 | LG |
| 13 | M/G | MAGNETIC CONNECTOR (REHEATER3) | GMC 9 | LG |
| 14 | M/G | MAGNETIC CONNECTOR (HUMIDITY) | GMC 12 | LG |
| 15 | AX | AUX RELAY(DC24V, AC220V) | HRT05-4PL | HANKURK RELAY |
| 16 | FUSE | FUSE | 2A | ETI |
| 17 | CP | CIRCUIT PROTECTOR (MICOM) | CP 03A | HONEYWELL |
| 18 | CP | CIRCUIT PROTECTOR (HUMIDITY) | CP 01A | HONEYWELL |
| 19 | PCB | HUMIDI PCB | POB | NORDMANN |
| 20 | EOCR | ELECTRIC OVER CURENT RELAY (BM) | SEZ-05 | SAMWA EOCR |
| 21 | EOCR | ELECTRIC OVER CURENT RELAY (CM) | D53-30 | SAMWA EOCR |
| 22 | IB | TERMINAL BLOCK | 15A | KACON CO.,LTD |
| 23 | EARTH | EARTH | 150*15*2T | |



| REV | DATE | DESCRIPTION | REVIEWER | CHECKER |
|-----|------|-------------|----------|---------|
| Δ | | | | |
| Δ | | | | |